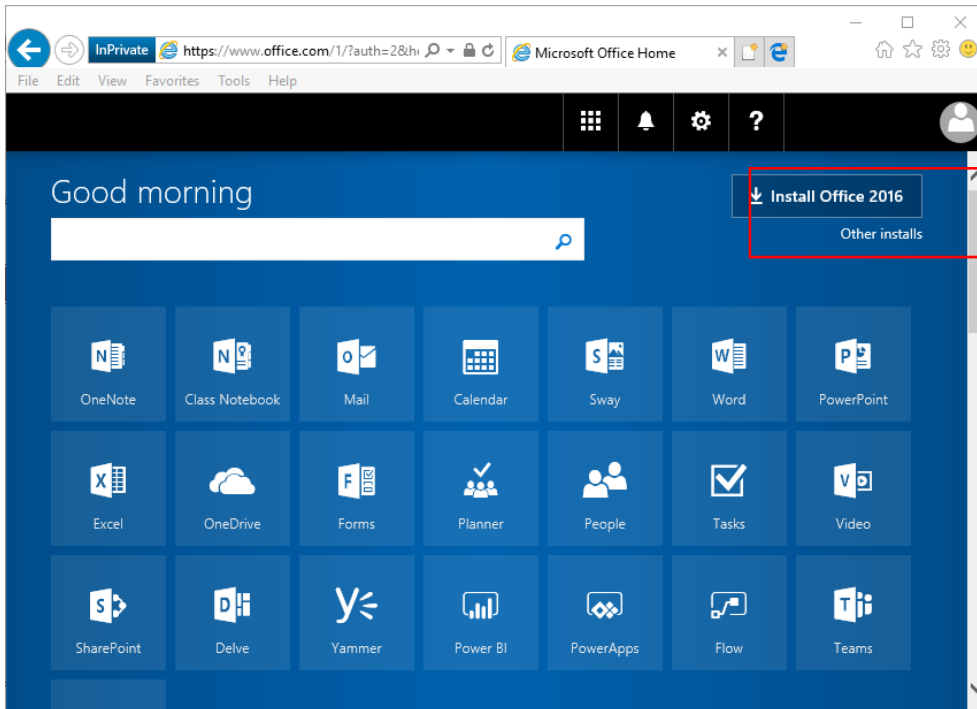
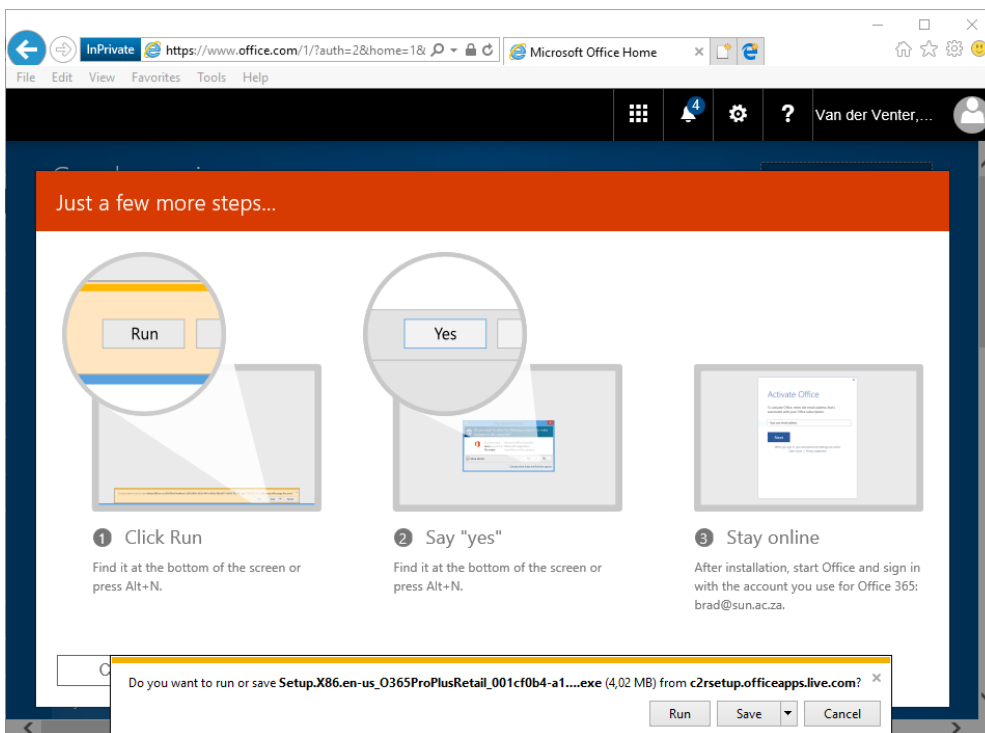


How do I install the Office365 applications on my Windows device?

1. Once logged in to <http://portal.office.com>, there will be an option to **Install Office 2016**, click on it.



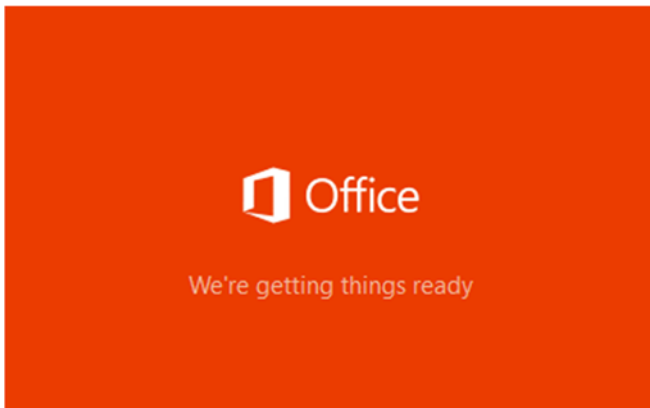
2. Click **Run** to start the installation.



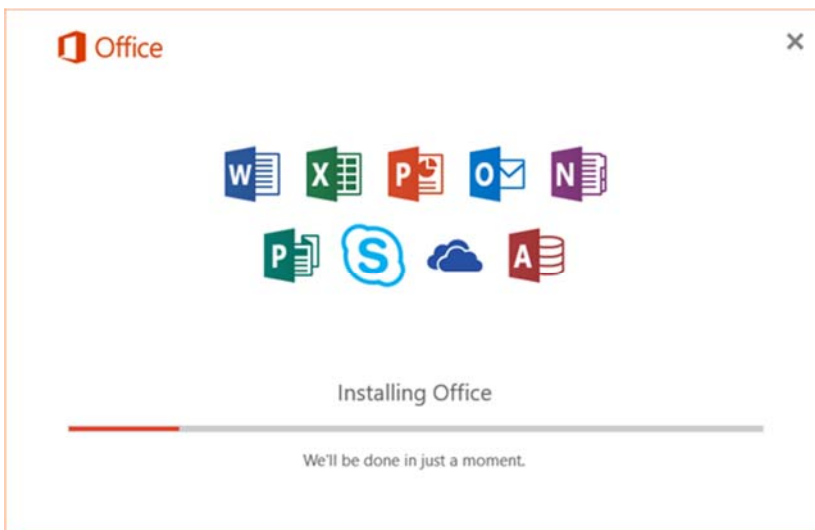
- 3.

Note: Click on Yes for any popup windows related to the setup of Office.

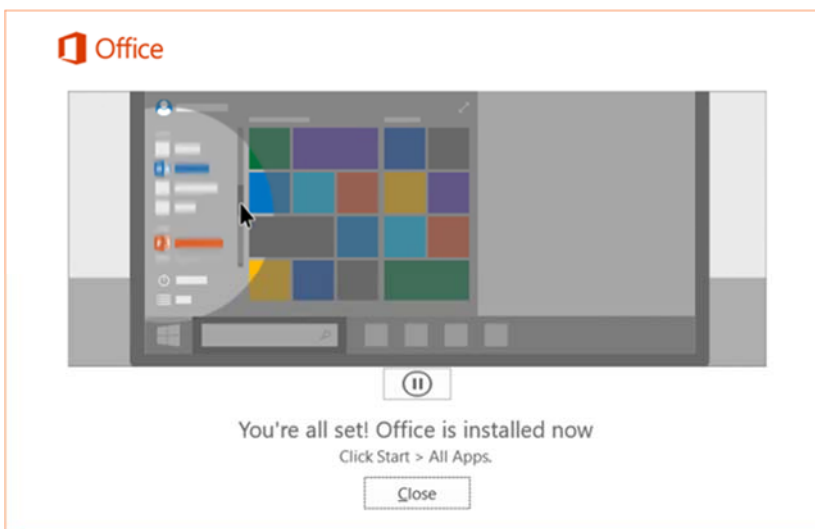
4. Setup will now begin.



5. Office will now install.



6. Setup is now complete.



Office applications is now accessible from the Start Menu.